

390.00 mm

WARNING

- Do not let the child play with this product.
- Never leave the child unattended.
Always keep child in view while in stroller.
- Use the stroller with a child from 0-5 years old.
- Use the stroller with only one child at a time.
- The maximum load of baby stroller is 22KGS, the maximum load of basket is 2KGS, please don't make them overload.
- The backrest reclined to the lowest position shall recommend when stroller is used by baby under 6 months.
- To avoid serious injury from falling or sliding out, always use the harness to secure baby.
- Keep away this stroller from high temperature objects, liquids, and electronics.
- Only replacement parts supplied or recommended by the manufacturer shall be used.
- Don't add a mattress thicker than 25mm.
- Be sure the stroller is fully open or folded before allowing child near the stroller.
- Any load attached to the handle and/or on the back of the backrest and/or on the sides of the stroller will affect the stability of the stroller



CROLLA

AIR SWIFT

Approval according to EN 1888

Auto Fold Compact Stroller

Follow us at



www.crollababy.com



Crolla Malaysia

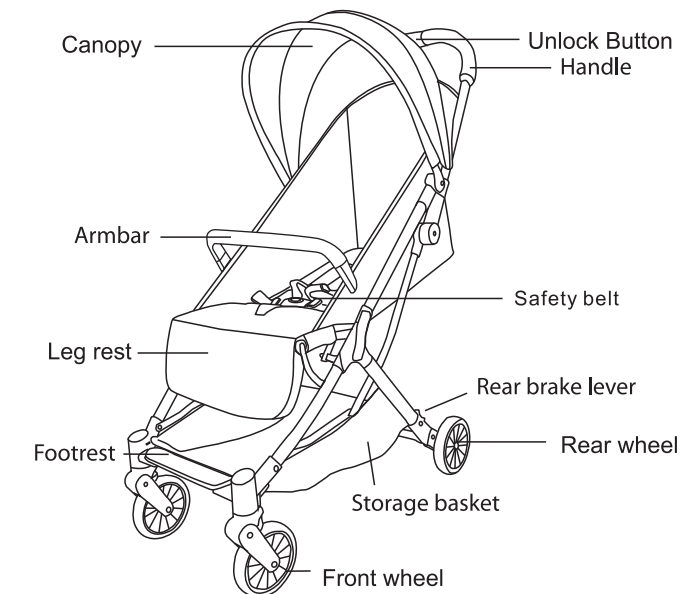


Crollababy

Maintenance

- To avoid injury please check and upkeep the stroller regularly. Don't put the fabric too long in water. Clean the fabric with soft brush.
- From time to time, check your stroller for loose crews, worn parts, torn material or stitching. Replace or repair the parts as needed.
- While opening the package you may find smell of EVA (rubbery smell). Its not harmful for the baby.

Parts

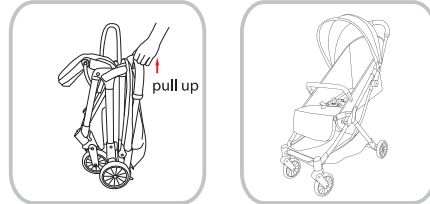


185.00 mm

Assembly & Usage Instruction

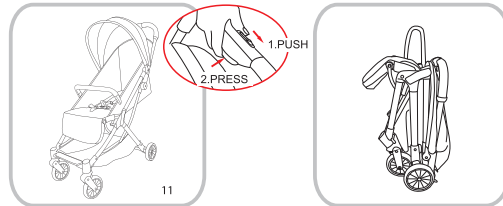
How to unfold stroller

1. Take out the stroller.
2. Pull the handle to lift the frame. Check that the stroller is completely latched before continuing to use.



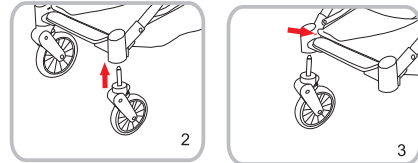
How to fold the stroller

1. Push the unlock button to left side and press folding button.
2. The stroller will get folded automatically and stand on its own.



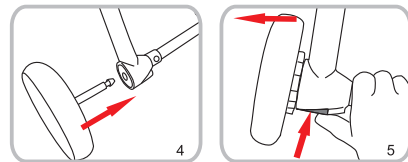
How to assemble front wheel

1. Insert front wheels into the front legs as shown in the image. Check that the wheels are securely attached by pulling out.
2. To remove front wheel, press the release button to detach the wheel.



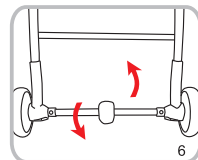
How to assemble rear wheels

1. Insert rear wheels into rear legs as shown in the image.
2. Press the release button on rear wheel to detach the rear wheels.



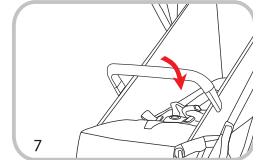
How to use brake

1. Step the brake lever downwards to lock wheels.
2. Lift the brake lever upwards to release wheels.

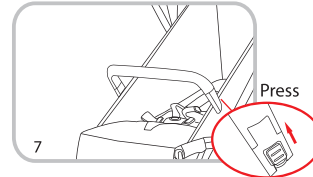


Assembly & Usage Instruction

How to use armbar

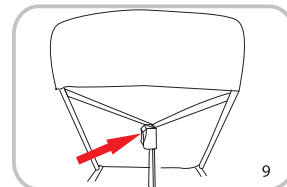


Installation: Align the bar end with the bar mounts and insert until it clicks into place.



Disassembly: To disassemble armbar, press the armbar release buttons and pull the armbar out.

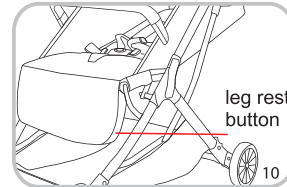
Backrest recline adjustment



Adjustment button

Recline backrest: Press the button and drag downward. Raise backrest: Press the button and pull the belt.

How to use the leg rest



Press the adjustment button on both sides of the leg rest, push up or down to adjust the leg rest.

Assembly & Usage Instruction

How to use the 5-point safety harness

Lock Buckle:

- Match the waist belt buckle with shoulder buckle, and click into the center buckle. A "click" sound means the buckle is locked completely.

Release Buckle:

- Press the button to release the buckle.

