



CROLLA | ZENN

INSTRUCTION MANUAL



NOTICE:
READ CAREFULLY AND KEEP FOR FUTURE REFERENCE.

PARTS LIST

Please check to make sure that all of the following parts listed are included in the box when opened. If there are any missing parts, please contact us before using the product.



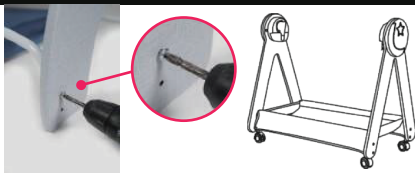
1. Headboard *2pcs
2. Bassinet frame and cover *1pcs
3. Basket frame with cover *1pcs
4. Mosquito net *1pcs
5. Mattress *1pcs
6. Pillow *1pcs

7. Soft toys *2pcs
8. Wheels *4pcs
9. Screws *8pcs
10. Remote control *1pcs
11. Data line *1pcs

ASSEMBLY

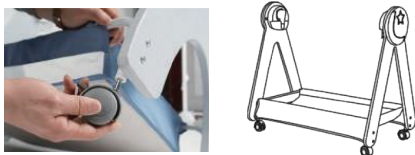
STEP 1

Installation of the basket:
Use the screws to install
the basket as shown in
the figure.



STEP 2

Installation of the wheels:
Insert the wheels into the
metal tube.



STEP 3

Install the bassinet and
place it between the
headboards. Then, insert
the bassinet into the
swing arm.



STEP 4

Put mattress and pillow
into the cradle.



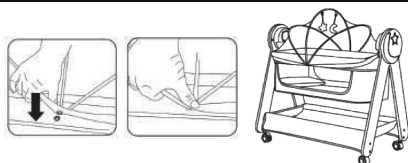
STEP 5

Fasten the safety buckle
before placing the baby
inside. Unlock the safety
buckle if you want to use
the swing feature.



STEP 6

Install the mosquito net
to the bassinet.



FUNCTIONS

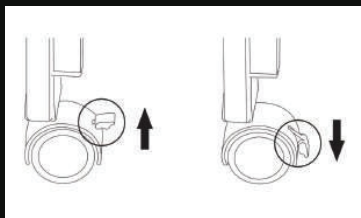
1. Unlock the safety buckle

Open the safety buckles that secured to the sides before starting the swing. Warning: In swing mode, the safety buckles must be open. Failure to follow these rules may result in injury.

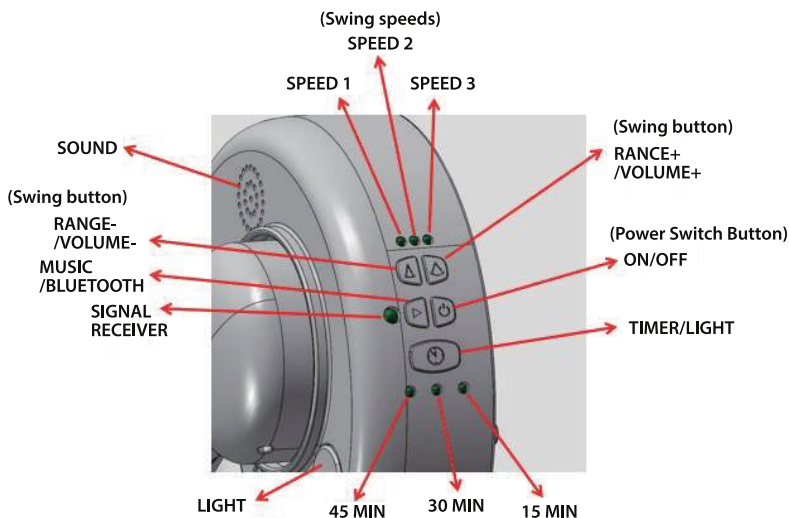


2. Locking and unlocking the wheels

Raise the brake button to unlock the wheels. Push down the brake button to lock the wheels.



ELECTRONIC PART



ELECTRONIC PART

DEVICE KEYS

1. Switch on/off the machine

Long press "Power Switch" for 2 seconds to turn on/off the device.

2. "Swing " button

- a. Press the 'Swing' button to adjust the swing speed. The gear indicator will display the selected speed.
- b. Long-press the 'Swing' button to adjust the music volume.

3. Timer mode

- a. Press the "timer" button to turn on the timer mode. Press the "timer" button to switch the timer.
 - First gear: 15 minutes
 - Second gear: 30 minutes
 - Third gear: 45 minutes
- b. Long press the "timer" button to turn on/off the night light.

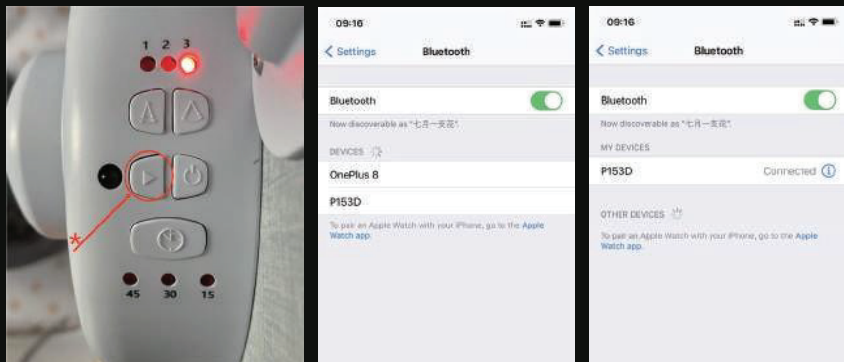
4. Music/Bluetooth

- a. If you want to switch or pause the music, just short press the "Music" button. Press one time to pause the music, press again to switch music.
- b. If you want to enter "Bluetooth" mode, long-press the 'Music' button for 2-3 seconds. If pairing is not completed within 2 minutes, the Bluetooth mode will automatically exit, and it will return to local music playback. If you do not wish to connect via Bluetooth, long-press for another 2-3 seconds to return to local music mode.

ELECTRONIC PART

5. Bluetooth linked

Long-press the Bluetooth button to enable Bluetooth pairing. Your phone's Bluetooth interface will display the 'P153D' option; select this option to establish the connection.



FUNCTIONAL DESIGN

a. If power on the bassinet by using the DC power supply, just plug in the DC plug. An indicator light will flash for 3 seconds, indicating that the product is now in standby mode.

b. If use the alkaline AA batteries, the indicator light will not light up, and the product will go into standby directly.

ELECTRONIC PART

POWER SUPPLY MODE: THREE WAYS

1. 4PCS AA alkaline batteries power supply (used as temporary power outage);



2. The product is equipped with a USB-DC power cable, which can be connected to the power supply by using the mobile phone charger;



3. The product is equipped with a USB-DC power supply cable, which can be connected to the power bank.



REMOTE CONTROL BUTTON

1. To turn off the bassinet, press and hold for 2 seconds on the on/off button (Note: the remote control does not need to be turned on)

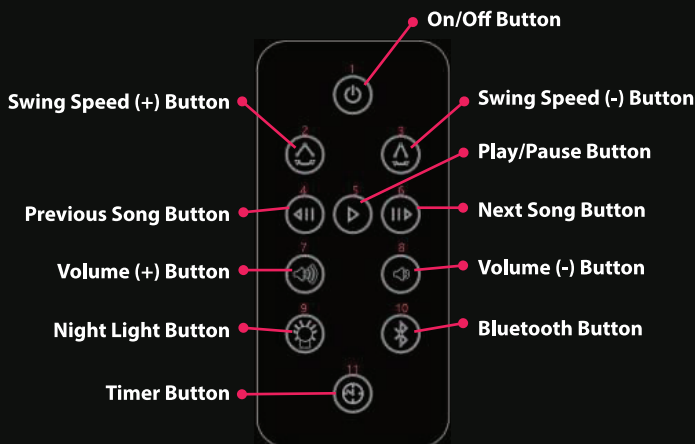
2. Swing speed button: Press the swing speed buttons to increase or to reduce the swing speed

3. Play/Pause music: Press the Play/Pause button

4. Volume button: Press the volume button to increase or decrease the volume

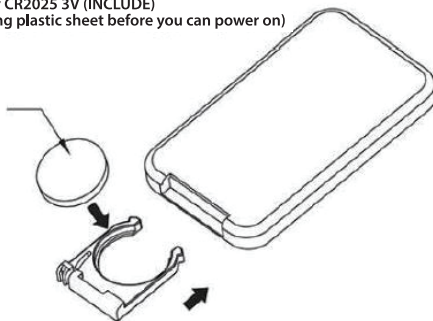
5. Night light button: Press the night light button to turn on/off the night light

6. Bluetooth button: Short press the Bluetooth button to enter the Bluetooth mode. If the pairing is not completed within 2 minutes, the Bluetooth mode will automatically exit, and it will return to local music playback.
7. Timer button: Press the Timer button to turn on the timer mode. Press the "timer" button to switch the timer.
- First gear: 15 minutes
 - Second gear: 30 minutes
 - Third gear: 45 minutes



8. Remote control battery packaging method description.

Button Battery CR2025 3V (INCLUDE)
(You need to remove the insulating plastic sheet before you can power on)



WARNING

- Failure to follow these warnings and the instructions could result in serious injury or death.
- Do not use this product without reading the instructions first.
- The bassinet should no longer be used when the child can sit up, kneel up or stand up.
- Placing additional items in the cot may pose a risk of asphyxiation.
- Do not place the product near any other potential products that could cause a danger of asphyxiation or strangulation, for example: strings, curtains, cords and etc.
- Always securely fasten and inspect assembly parts to prevent collapse or loosening, which could potentially trap your child or their clothing and lead to strangulation.
- The crib should always be placed on a horizontal floor.
- Gaps should not be filled with pillows, blankets or other items.
- **DO NOT** let children play near the crib without supervision.
- **DO NOT** use the product if any of the parts are broken, or damaged. **DO NOT** replace any of the parts yourself.
- **DO NOT** use accessories that have not been approved by the manufacturer.
- Ensure that all assembly parts and locking devices are correctly fitted.
- Never use the cover without the metal structure.
- To avoid the risk of strangulation, the attachment system to the adult bed should always be kept out of the crib and out of reach.
- Do not use more than one mattress in the bassinet.
- Use **ONLY** the mattress provided from us.
- To reduce the risk of SIDS, pediatricians recommend healthy infants be placed on their backs to sleep, unless otherwise advised by your physician.
- To prevent the risk of fire; avoid placing the bassinet close to a fire or other sources of heat, such as electric or gas heating devices and etc.

NOTICE

- a. Follow all of the instructions carefully. Incorrect use may cause damage to the bassinet.
- b. Overloading, incorrect folding, or incorrect use of the accessories may cause damage to the bassinet.
- c. Your child should never be left unattended.

MAINTENANCE & CLEANING:

- Please routinely check to ensure that the bassinet is secure.
- Clean the bassinet using a soft, dry cloth, or sponge.
- Do not use alkaline or acidic water to wash the bassinet to prevent water corrosion of the iron pipes or hardware.
- Avoid using or storing the bassinet in wet, cold, or high-temperature environments for extended periods. Use a brush or other clean tools to remove any stains from the fabric.