

MANUAL  
GUIDE



# CROLLA® ALTAS.360

*Effortless  
Travel  
Maximum  
comfort*



**Superbrands**  
MALAYSIA



**CONSUMERS'  
CHOICE AWARD**

Find us at:

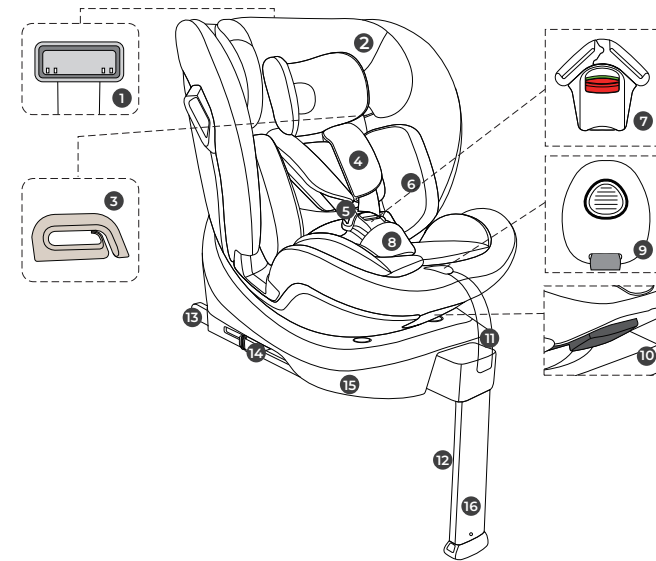
[www.crollababy.com](http://www.crollababy.com)

 Crolla Malaysia    Crollababy

# CONTENT

<b>01</b>	PRODUCT OVERVIEW	01-02
<b>02</b>	SAFETY WARNING	03-05
<b>03</b>	USAGE	
	3.1 Install position of the child seat in vehicle	
	3.2 Adjust the headrest	
	3.3 Checking the shoulder strap height	
	3.4 Usage of buckle	
	3.5 Adjust the length of harness belt	
	3.6 Adjust the ISOFIX attachments	
	3.7 Adjust method of support leg	
	3.8 One click adjustment method: rotation & adjust gear	
	3.9 Precautions for using when child height is 100-150cm	
<b>04</b>	Installation for child safety seat	14-15
	4.1 Installed rearward-facing (Height:40-105CM)	16-17
	4.2 Installed forward-facing (Height:76-105CM)	18-19
	4.3 Installed forward-facing (Height:100-125CM)	20
<b>05</b>	Cleaning and dismantling	20
	5.1 Daily maintenance	21-22
	5.2 Washing instruction	
	5.3 Remove and assemble the fabric cover	

# 01 PRODUCT OVERVIEW



- |                             |                              |
|-----------------------------|------------------------------|
| ① Headrest adjustment level | ① Harness adjuster button    |
| ② Headrest                  | ② Rotation & Angle adjuster  |
| ③ Shoulder belt guide       | ③ Harness adjuster strap     |
| ④ Shoulder Pad              | ④ Support Leg release button |
| ⑤ Shoulder strap            | ⑤ ISOFIX Attachment          |
| ⑥ Infant Cushion            | ⑥ ISOFIX release button      |
| ⑦ Buckle Alert System       | ⑦ Base                       |
| ⑧ Crotch Pad                | ⑧ Support Leg                |

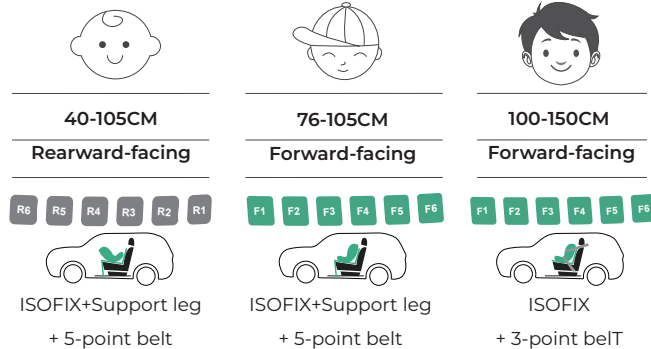
# 02

## ! SAFETY WARNING

In order to ensure the safety of your child, please read the relevant instructions carefully to avoid dangerous situations!

### Understand the product

This is a height of 40-150cm product, suitable for children from 0-36KG.



\* **DO NOT** use forward facing before the child's age exceeds 15 months.

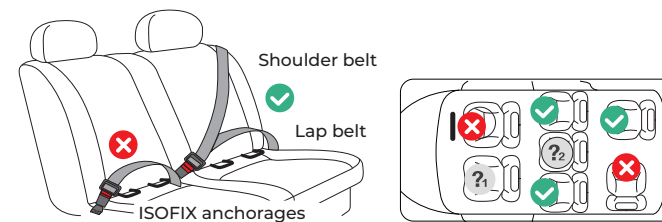
### Precautions for product use

- This product can be rearward-facing used for children with a height of 40-105cm (Weight: 0-18kg), using ISOFIX+Support leg to fix the child restraint system.
- This product can also be forward-facing used by 5-point safety system for children with a height of 76-105cm (Weight: 9-18kg), using ISOFIX+Support leg to fix the child restraint system.
- This product can also be forward-facing used for children with a height of 100-150cm (Weight: 15-36kg), using adult three-point belt to fix the child restraint system, or using ISOFIX and adult three-point belt together to fix the child restraint system.
- Do not use any load bearing contact points other than those described in the instructions and marked in the child restraint when in 100-150cm.
- Please keep for future reference, a storage compartment for the instructions is located on the back of the child seat.
- Do not use this child seat at home. It has not been designed for home use and should only be used in your car.
- Do not use rearward facing child seat in seating positions where there is an active frontal airbag installed, death or serious injury can occur.
- For the reason of safety, the child seat must be fixed inside the vehicle using ISOFIX anchorages even if you do not put your child inside the child seat.
- The rigid items and plastic parts of a child seat shall be positioned and installed that they are not liable, during everyday use of the vehicle to become trapped by a moveable seat or in a door of the vehicle.
- Any straps holding the restraint to the vehicle should be tight.
- Any support-leg should be in contact with the vehicle floor.
- Any straps restraining the child should be adjusted to the child's body.
- Straps should not be twisted.

- Ensure that any lap strap is worn low down, so that the pelvis is firmly engaged, shall be stressed.
- The device should be replaced when it has been subject to violent stresses in an accident.
- It's dangerous to make any alterations or additions to the device without the approval of the Type Approval Authority, also dangerous not to follow closely the installation instructions provided by the manufacturer.
- When the child restraint is not provided with a textile cover, the child restraint should be kept away from sunlight, otherwise it may be too hot for the child's skin.
- Don't leave your child in the device unattended;
- Any luggage or other object liable to cause injuries in the event of a collision shall be properly secured.
- The ECRS shall not be used without the cover.
- The seat cover should not be replaced with any other than the one recommended by the manufacturer, because the seat cover is a part of the child seat's performance.
- The instructions should be kept with the device throughout its lifespan.
- The user should also read the vehicle owner's manual.
- Never use a second-hand product, as you can never be certain what was happened to it.

# 03 USAGE

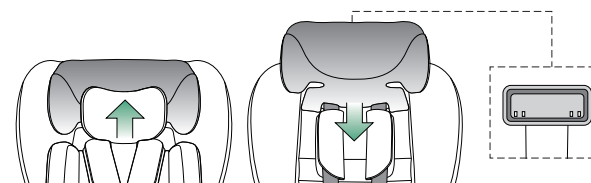
## 3.1 INSTALL POSITION OF THE CHILD SEAT IN VEHICLE



Only suitable if the approved vehicles are fitted with 3 point safety-belt, approved to UN/ECE Regulation No.16 or other equivalent standards

- ❓1 Not to use rearward-facing in seating positions where an active frontal airbag is installed.
- ❓2 Only use on this seat if ISOFIX anchorages are fitted

## 3.2 ADJUST THE HEADREST



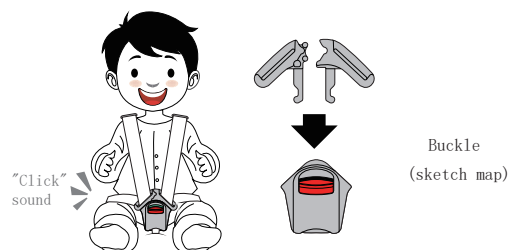
As shown in the picture, you can adjust the headrest up and down by pulling the headrest adjustment level, to a position suitable for the child's head.

### 3.3 CHECKING THE SHOULDER STRAP HEIGHT

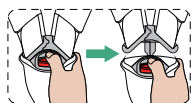


Always check that the shoulder straps are positioned at the correct height for your child. The shoulder harness height must be even with or just below the top of child's shoulders.

### 3.4 USAGE OF BUCKLE

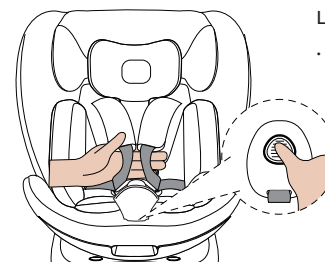


- Get the left and the right pieces of buckle together
- Insert the two pieces into the slot of the buckle until hear a "click" sound, means it is buckled successfully.
- Ensure the harness is properly secured by pulling the shoulder straps upwards to check.



To release the harness, press the red button on the buckle and the pieces will pop up.

### 3.5 ADJUST THE LENGTH OF HARNESS

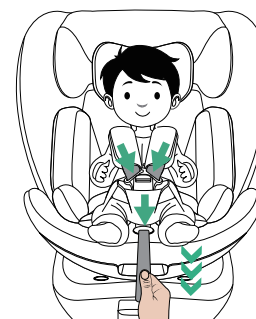


#### LOOSEN THE HARNESS:

- Press down the button as you grip the two shoulder straps with another hand. Pull the shoulder straps towards you to loosen the harness.



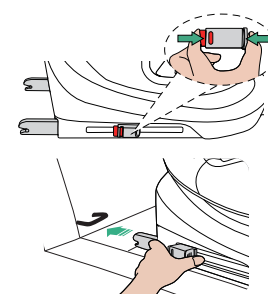
Note:  
Hold both shoulder straps at the same time and do not hold the shoulder covers.




#### TIGHTEN THE HARNESS:

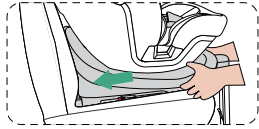
- Pull the harness adjuster strap until the shoulder straps are fully tightened.
- The harness should be adjusted as tightly as possible without causing discomfort to your child. A loose harness can be dangerous.
- Check the harness adjuster and tighten each time when the child is placed in the seat

### 3.6 ADJUST THE ISOFIX ATTACHMENTS

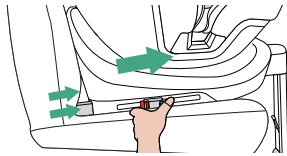
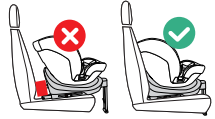


#### INSTALL ISOFIX:


- To install, press the release button to extend both sides of the ISOFIX attachments to the longest then clip into the ISOFIX anchor points, until you hear a 'click' sound and make sure that the ISOFIX indicator turns GREEN (  ). Then, push the child seat forward until it is fully tight against the car seat.
- ISOFIX can be extended and retracted in to fit different vehicle seat positions



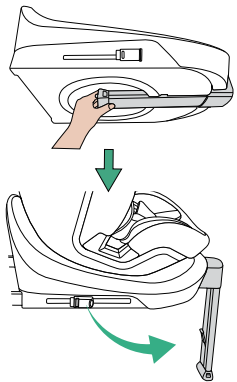
After installed the ISOFIX, push the base towards the backrest of the vehicle until the base is fully aligned with the vehicle back.



#### RELEASE ISOFIX:

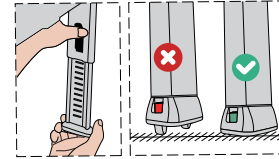
- To release the ISOFIX, press and hold the release buttons on both sides of the ISOFIX attachments, then pull the ISOFIX attachments back to the shortest position, and the ISOFIX indicators will show red (  )

### 3.6 ADJUST THE ISOFIX ATTACHMENTS



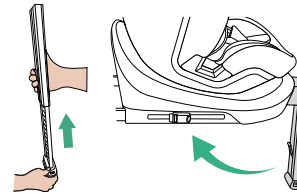
#### OPEN METHOD:

- Lift up the seat and take out the support leg until the support leg is at a 90° perpendicular. Then pull it forward until you hear a "click."



#### ADJUST THE LENGTH OF THE SUPPORT LEG:

- Press and hold the adjustment button on the support leg, then adjust the length up and down until it touches the car ground and bottom of the support leg will turns GREEN.



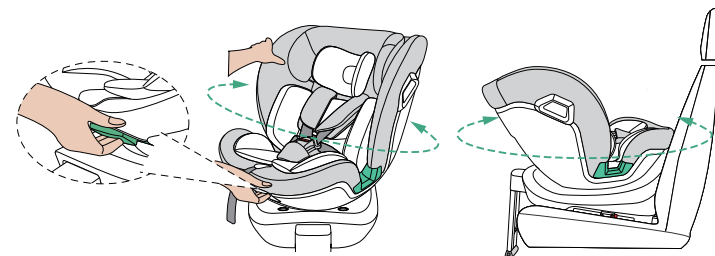
#### FOLD METHOD:

- Press and hold the support leg release button to shorten the support leg. Then lift the base and push the support leg into the compartment underneath the base.

### 3.8 HOW TO ROTATE AND ADJUST THE RECLINE LEVEL OF CHILD SEAT

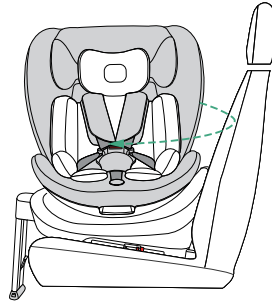
#### ROTATING CAR SEAT ADJUSTMENT

Pull the rotation adjuster with one hand then rotate the child seat left and right to adjust to rearward facing (Height: 40-105cm) or forward facing (Height: 76-150cm).

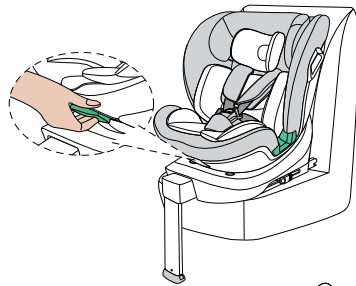


**90° ROTATION POSITION:**

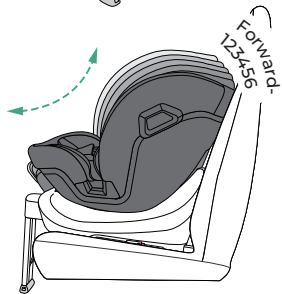
Pull and hold the rotation adjuster, then turn the seat to the 90° position so it faces the car door, making it



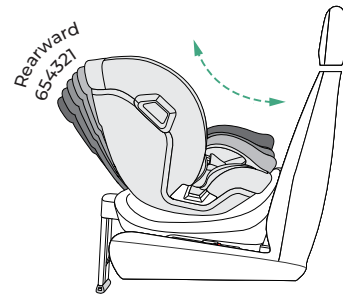
**SEAT RECLINE ADJUSTMENT**



Pull and hold the adjuster button, then pull back and forth to adjust the child seat



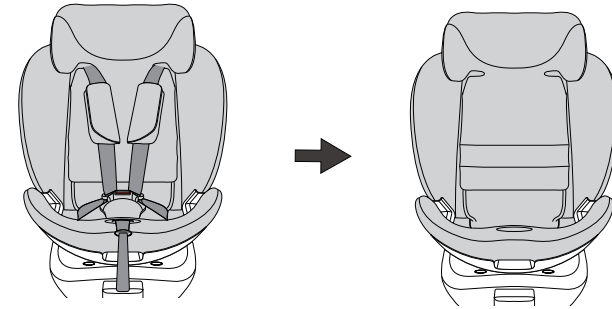
6 forward-facing recline positions



6 rearward-facing recline positions



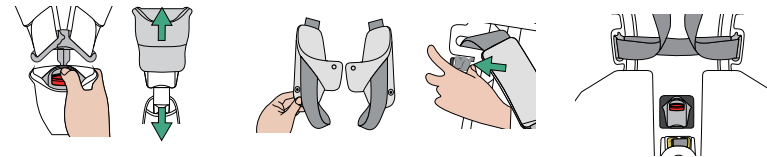
**3.9 PRECAUTIONS FOR USE WITH CHILDREN 100-150CM**



**NOTE:**

For children  $\geq 100\text{cm}$ , remove the buckle, crotch pad, infant cushion, shoulder straps and shoulder pads before use.

**REMOVAL STEPS:**



**STEP 1:**

Open the buckle and pull it out from the crotch pad.

**STEP 2:**

Open the shoulder covers on both sides, then detach the covers and straps from the headrest hook.

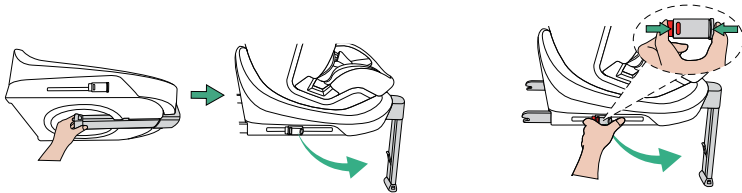
**STEP 3:**

Place the removed buckle into the buckle storage slot under the seat cover, insert the side pieces into the side slots, and straighten the seat cover

# 04 INSTALLATION

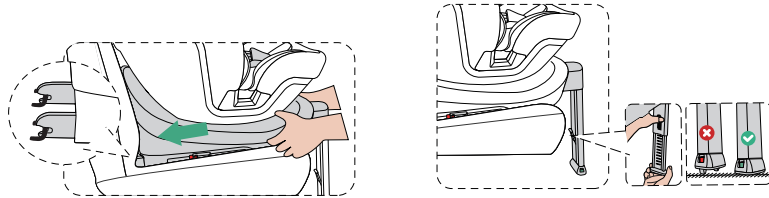
## 4.1 REARWARD FACING INSTALLATION:


Height:  
40 - 105cm



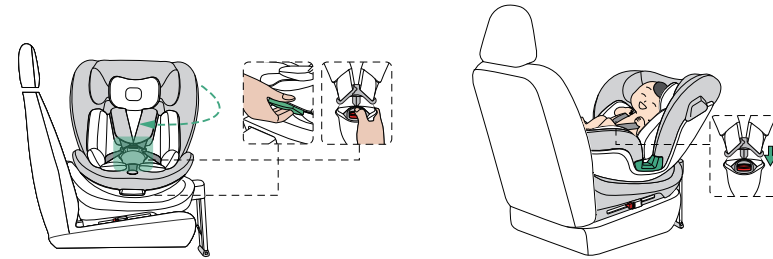
Lift up the seat and take out the support leg until the support leg is at a 90° perpendicular. Then pull it forward until you hear a "click".

Press and hold the ISOFIX release buttons on both sides, then push the ISOFIX connectors out.



Clip them into the ISOFIX anchor points. When you hear a "click" sound and the ISOFIX indicator turns GREEN (  ), it means it is locked

Press and hold the adjustment button on the support leg, extend it until it touches the car ground and the indicator at the bottom of the support leg will




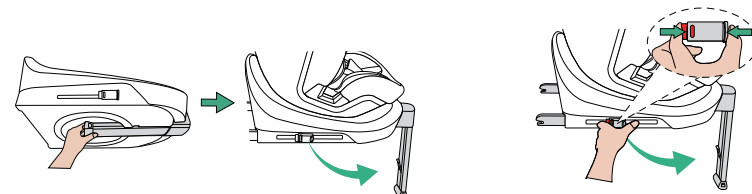
Pull the rotation adjuster button to rotate the seat to the 90° facing door direction. Then undo the buckle and move the shoulder straps to the sides

Place the child in the seat, lock the buckle, and tighten the shoulder straps. Then pull the rotation adjuster button to rotate the seat to the rearward facing direction.

## 4.2 FORWARD FACING INSTALLATION:

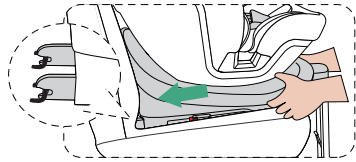
HEIGHT: 76 - 105cm


 The comfortable cushion should be removed when the child's height exceeds 75 cm.

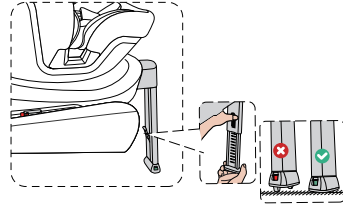


Lift up the seat and take out the support leg until the support leg is at a 90° perpendicular. Then pull it forward until you hear a "click".

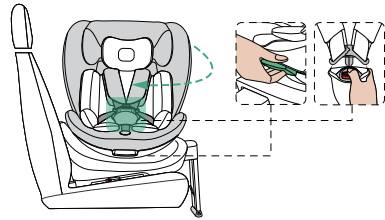
Press and hold the ISOFIX release buttons on both sides, then push the ISOFIX connectors out.



Clip them into the ISOFIX anchor points. When you hear a "click" sound and the ISOFIX indicator turns GREEN (  ), it means it is locked



Press and hold the adjustment button on the support leg, extend it until it touches the car ground and the indicator at the bottom of the support leg will



Pull the rotation adjuster button to rotate the seat to the 90° facing door direction. Then undo the buckle and move the shoulder straps to the sides



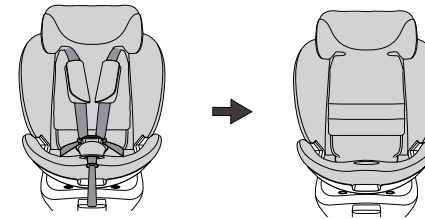
Place the child in the seat, lock the buckle, and tighten the shoulder straps. Then pull the rotation adjuster button to rotate the seat to the forward facing direction.

### 4.3 FOWARD FACING INSTALLATION:

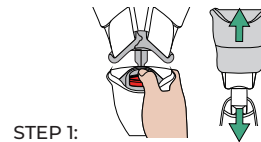
HEIGHT: 100 - 150cm

USAGE: ISOFIX+3 point belt

When a child's height is  $\geq 100$ cm, the buckle, crotch pad and shoulder covers on the seat need to be removed before use!

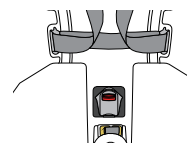


#### REMOVAL STEPS:

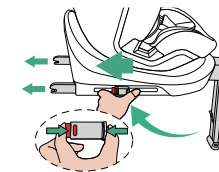


STEP 1:  
Open the buckle and pull it out from the crotch pad.

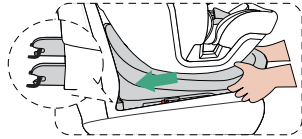
STEP 2:  
Open the shoulder covers on both sides, then detach the covers and straps from the headrest hook.



STEP 3:  
Place the removed buckle into the buckle storage slot under the seat cover, insert the side pieces into the side slots, and straighten the seat cover




STEP 4:  
Fold the Support Leg: Press and hold the support leg release button to shorten the support leg. Then lift the base and push the support leg into the compartment underneath the base.



**Install the ISOFIX:**

Press and hold the ISOFIX release buttons on both sides, then push the ISOFIX connectors out.

**STEP 5:**

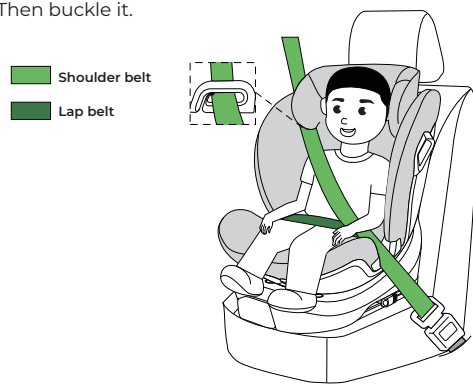
Clip them into the ISOFIX anchor points. When you hear a "click" sound and the ISOFIX indicator turns GREEN (  ), it means it is locked.

**STEP 6:**

Put the child into the safety seat, adjust the headrest up according to the child's height

**STEP 7:**

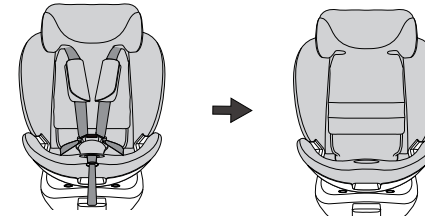
Pull out the 3-point seat belt then pass through the shoulder belt guide of the headrest and the lap belt must pass through the lap belt guiding (as shown in the picture). Then buckle it.



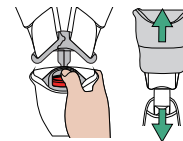
HEIGHT: 100 - 150cm

USAGE: 3 point belt

When a child's height is  $\geq 100$ cm, the buckle, crotch pad and shoulder covers on the seat need to be removed before use!

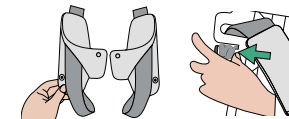


**REMOVAL STEPS:**



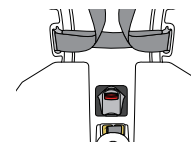
**STEP 1:**

Open the buckle and pull it out from the crotch pad.



**STEP 2:**

Open the shoulder covers on both sides, then detach the covers and straps from the headrest hook.



**STEP 3:**

Place the removed buckle into the buckle storage slot under the seat cover, insert the side pieces into the side slots, and straighten the seat cover

**STEP 4:**

Put the child into the safety seat, adjust the headrest up according to the child's height.

- Shoulder belt
- Lap belt



**STEP 5:**

Pull out the 3-point seat belt then pass through the shoulder belt guide of the headrest and the lap belt must pass through the lap belt guiding (as shown in the picture). Then buckle it.

**5.1 Daily Maintenance**

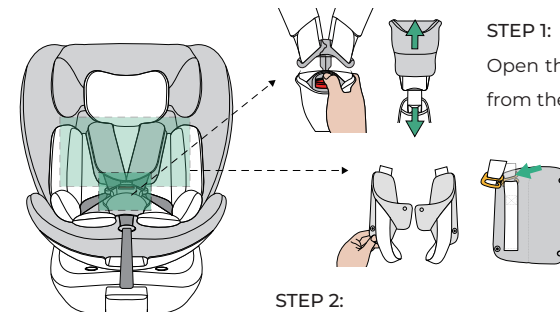
- During regular use, periodically check the child seat. Replace child seat after an accident to ensure safety.
- Please keep this child seat in dry and ventilated place to avoid damp moldy.
- If the child seat becomes dusty, clean the seat belt and plastic pieces by swiping them with a damp sponge and let it dry under ambience.
- Please hang dry the soft goods in the shade.
- If food or drink spills on the buckle, remove the seat belt from the seat and rinse it gently with warm water. Let it air dry.
- For cleaning the entire child seat fabric cover, please refer to the washing instruction.

**5.1 Daily Maintenance**

- Never use any solvent, chemical detergent or lubricant on any part of your child seat



**5.1 Remove and Assemble the fabric cover**



**STEP 1:**

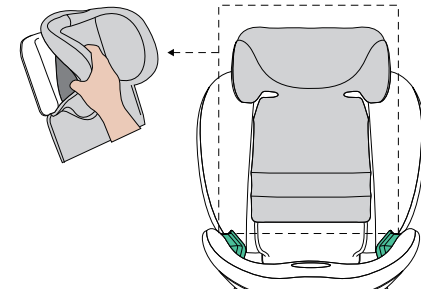
Open the buckle and pull it out from the crotch pad.

**STEP 2:**

Open the shoulder covers on both sides, then detach the covers and straps from the headrest hook

**STEP 3:**

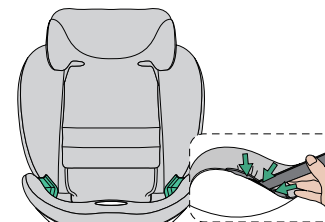
Lift the headrest cover carefully along the edges of the headrest.



**STEP 4:**

Lift the seat cover carefully along the edges of the seat.

**Installation of cloth cover**



Reverse steps above. Use a straight board to tuck the edge of the seat cover into the seat, then smooth and straighten the cover before use.